

MEGA Product > MEGA Suite > Transformation Tools

MEGA SolMan

With MEGA SolMan, you can align SAP blueprints with business processes.

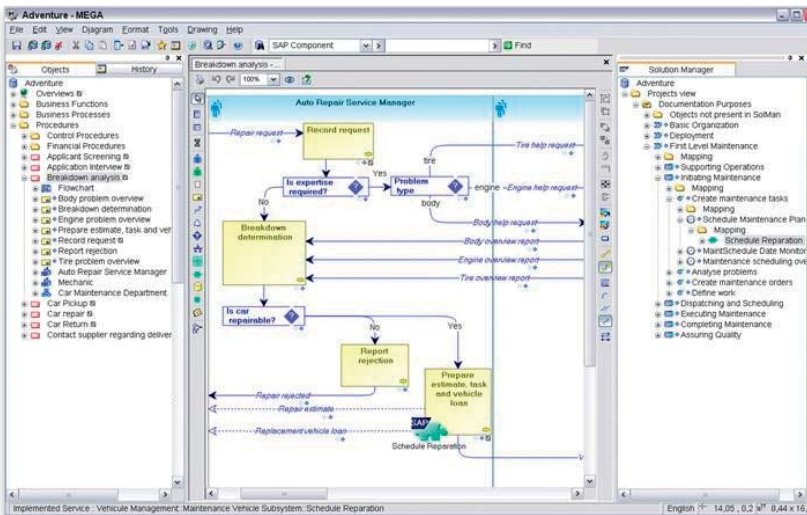
MEGA SolMan Overview

Mapping your organization's business processes with the SAP implementation view ensures the connection with enterprise strategy and facilitates the reuse of existing process descriptions. MEGA SolMan is a bidirectional interface with SAP® Solution Manager that provides the synchronization of SAP models with business processes. Comparing and contrasting the SAP models with the MEGA business models allows you to contextualize your SAP implementation in your specific business context.

Thanks to the MEGA repository, SAP process definitions and their relationships with business processes can be fully documented. In addition, the process descriptions can be reused in other projects, such as business/IT alignment, business process optimization, and SOA implementation. The flexibility of the platform allows for full document customization, including the generation of online help.

KEY POINTS

- Align your SAP implementation with your business processes.
- Reuse the SAP process information in other projects, such as governance and business/IT alignment.
- Integrate your SAP blueprints into a global enterprise architecture environment.
- Reduce the time and cost necessary for an SAP deployment by assessing requirements beforehand.



MEGA SolMan > Features

MEGA SolMan is built on the MEGA Suite repository and benefits from its robustness and scalability. Flexibility is an inherent service of this tool.

This product is part of the MEGA Suite transformation tools. This range of tools provides services to implement requirement-driven system design, simulate business processes, plan and manage IT transformation, and align business processes with SAP blueprints.

MEGA SolMan is totally integrated with MEGA Process and MEGA Process BPMN, the business process analysis tools in the MEGA Suite. These tools provide powerful analysis and design functionalities that enable the identification, analysis, optimization, and documentation of business processes and organizational structures.

SAP Concept Design & Mapping

MEGA SolMan provides the tools necessary for mapping the relationships between business process models and an SAP implementation. With the Design Module of MEGA SolMan, you can model SAP concepts in the MEGA Suite. The MEGA SolMan Design Module features:

- Integration with MEGA Process and MEGA Process BPMN;
- Tailor-made or predefined SAP views;
- Support of SAP Solution Manager concepts, such as business scenario, process, process step, transaction, organizational unit, and master data;
- A navigational process hierarchy;
- The ability to create, update, or delete any object of the MEGA SolMan process hierarchy, or mark it as inactive;
- The possibility of connecting MEGA SolMan objects with other MEGA objects;
- Queries for newly added objects, unused objects, and so on;
- Access to predefined solution templates from the SAP Solution Manager Business Process Repository;

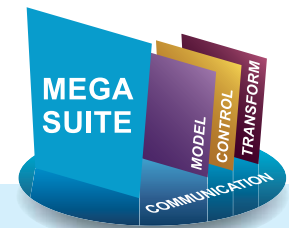
- Documentation transfers between the MEGA Suite and SAP Solution Manager:
 - Documentation generated in the MEGA Suite is accessible directly from SAP Solution Manager,
 - SAP Solution Manager documentation associated with MEGA objects is accessible directly from MEGA Suite tools.

Bidirectional Exchange

MEGA SolMan ensures the synchronization of SAP models with business process descriptions through a bidirectional interface with SAP Solution Manager. The Exchange Module of MEGA SolMan manages the import and export of process information between SAP Solution Manager and the MEGA Suite.

The MEGA SolMan Exchange Module involves:

- Installation on the user's workstation;
- ABAP code loaded onto the SAP server;
- A service available in the MEGA Suite user interface uses standard remote function calls to communicate with the ABAP component;
- The import of the SAP project definition into the MEGA Suite;
- The export of the updated project definition into SAP Solution Manager.



MEGA Suite

The MEGA Suite is comprised of four categories of products: modeling tools, control tools, transformation tools and communication tools.

The transformation tools support projects ranging from requirement-driven system design to business processes simulation to IT transformation planning. The MEGA Suite is modular, so each tool may be used independently or combined with other tools, depending on your project context. All products are based on a common repository and share the same platform services. The MEGA Suite also supports standard libraries and frameworks.



Insight. Collaboration. Value.

www.mega.com

